

# *Virtuoso*

---

Composite Door Collection



*"the finishing touch to any home"*







*Welcome ...*

# Door styles and glazing configurations

*No matter what style of property, we can offer you designs of doors which complement the architecture of your home.*

## I N D E X

GLAZING NOTES	Pages 5-6
COLOUR RANGE	Pages 5-6
BACKING GLASS	Page 6
HARDWARE	Pages 7-8
SECURED BY DESIGN	Pages 9-10
CARLTON TWO	pages 11-12
CARLTON SOLID	page 12
CARLTON FOUR	pages 13-14
CHILTON ONE	pages 15-16
CHILTON THREE	pages 17-18
CLIFTON	pages 19-22
ASTON	pages 23-24
ELTON	pages 23-24
CRAFTON	pages 25-26
CLASTON	pages 27-28
CHAPLETON A9	page 29
CHAPLETON 4	page 29-30
CHAPLETON A1	pages 29-30
CHAPLETON A2	pages 29-30
CHAPLETON A3	page 30
CHAPLETON THREE	page 30
CHAPLETON SOLID	page 30
CHAPLETON C2	page 31
CHAPLETON D4	page 31
CHAPLETON D4 GRILL	page 31
CHAPLETON B3	page 31
CHAPLETON C4	page 31
CHAPLETON THREE	page 31
CHAPLETON FG	page 31
MALTON	page 32
HARTON	page 32
FRENCH DOORS	Page 33
STABLE DOOR	Page 34



Carlton Solid



Carlton Two



Carlton Four



Chilton One



Chilton Three



Clifton



Chapleton A1



Chapleton A2



Chapleton A3



Chapleton Three



Chapleton Four Handle



Chapleton Four Hinge



French Composite



Stable A1



Stable A2



Stable B1







Aston



Elton



Crafton



Claston



Malton



Harton



Chapleton FG



Chapleton B3



Chapleton C2



Chapleton C4



Chapleton D4



Chapleton D4 Grill



Carlton



Carlton One



Carlton Two



Clifton



Aston



Elton Left



Elton Right

Side Panels

## Key Information

Due to the hand staining process no colour match guarantee can be provided against the Rosewood foiled outer frame and Darkwood door leaf.

Due to the hand staining process no colour match guarantee can be provided against the Sherwood Oak outer frame and Oakwood door leaf.

Lead is a natural product which when exposed to the environment will undergo certain atmospheric transformations such as oxidization. This is perfectly natural and will eventually settle down to take on a natural weathered lead appearance.

Protect your door from natural thermal distortion by lifting the handle up every time you close the door.

Clean your door with warm soapy water (not washing up liquid) and wipe with a soft cloth. Do NOT use any cleaning products.

**RB** "Resin Bevel" and **TR** "Triple Glazed" designs incorporate their own unique backing glass.

**GT** "Glass Tile" designs incorporate clear backing glass.

**LF** "Lead & Film" and **GB** "Glass Bevels" designs have a choice of backing glass (see backing glass options).

Due to the nature of our products and the limitations of the printing process, no liability can be accepted for the accuracy of the colours or designs depicted, which are intended for guidance only.

The company reserves the right to alter specifications without prior notice.

WB Group terms and conditions apply.



# Step inside for a perfect welcome ...

## Glazing Design Notes

From the door style to the colour and choice of hardware, we'll help you make a statement.

Our composite doors are manufactured utilising only the best components to create stylish, secure, reliable and durable doors.

With the latest CNC machinery and C.A.D software the doors are precision built to exacting standards.

The 44mm composite door is constructed from fibre glass skins for a beautiful timber-like appearance, polyurethane cores for greater thermal efficiency.

The 70mm lead free PVCu outer frame is fully reinforced for added strength and security.



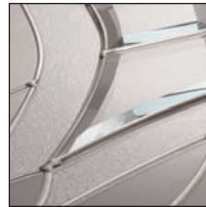
### LF Lead & Film

This process incorporates self adhesive lead and colour film to replicate traditional stained glass designs, all external joints are soldered.



### RB Resin Bevels

Designs which are complex yet delicate, using the latest technology these unique designs cannot be reproduced by any other process.



### GB Glass Bevels

Incorporating hand crafted glass bevels which are applied to the glass and finished with lead work, external joints are soldered.



### GT Glass Tiles

These designs incorporate either kiln fused glass tiles or sparkling clear bevels on a sandblasted effect base glass.

## 5 Standard Colour Range



White

Black

Red

Blue

Green

Darkwood

Oakwood

Select from one of our 7 standard colours for a traditional yet beautiful door finish

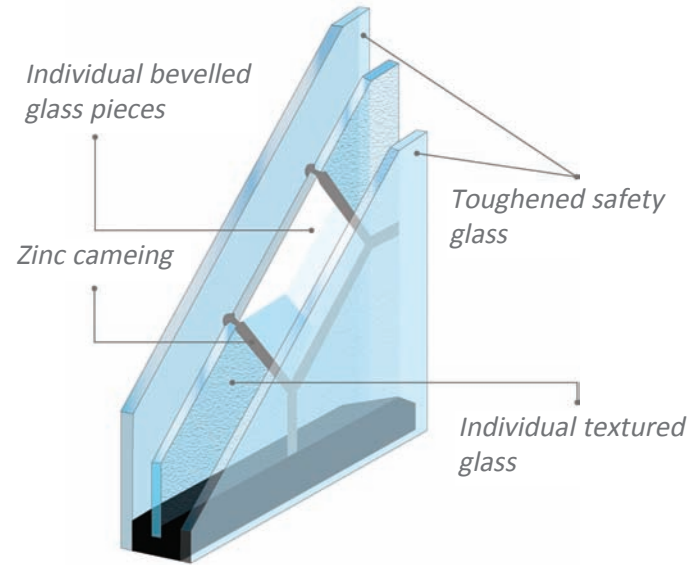


## Triple Glazed Unit Make-up

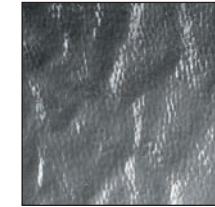


### TR Triple Glazed

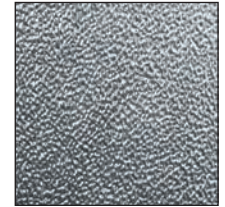
The beautifully hand assembled and soldered centre panes have the benefit of triple glazing preventing oxidation or discolouring of the lead. The easy to clean units also provide superior heat and sound insulation.



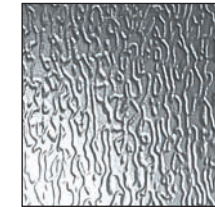
## Backing Glass



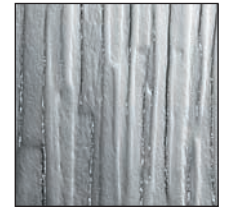
Minster



Stippolyte



Contora



Cotswold

### N.B.

"Resin Bevel" and "Triple Glazed" designs incorporate their own unique backing glass.

"Glass Tile" designs incorporate clear backing glass.

"Lead & Film" and "Glass Bevels" designs have a choice of backing glass (see backing glass options).

## Superior Colour Range



Anthracite Grey



Sage



Plum



Cream



Olive



Slate



Sky Blue

Our superior colour options are sprayed in house utilising the latest paint technology for that bespoke door finish





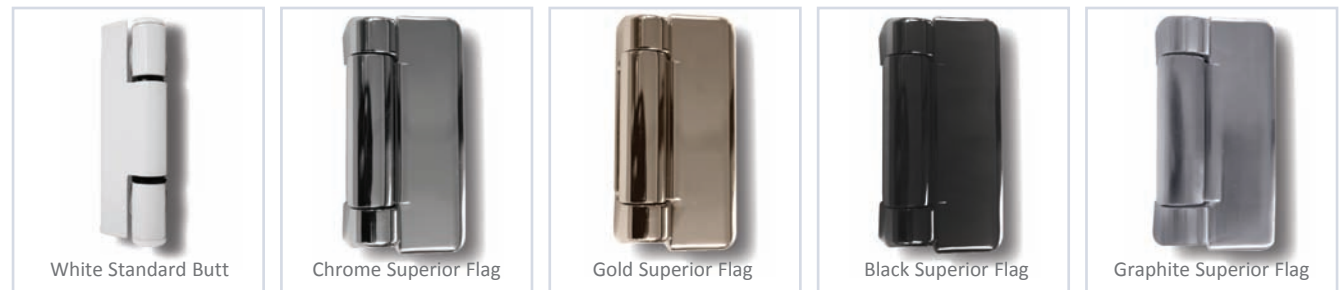
## Handles



## Letterplates

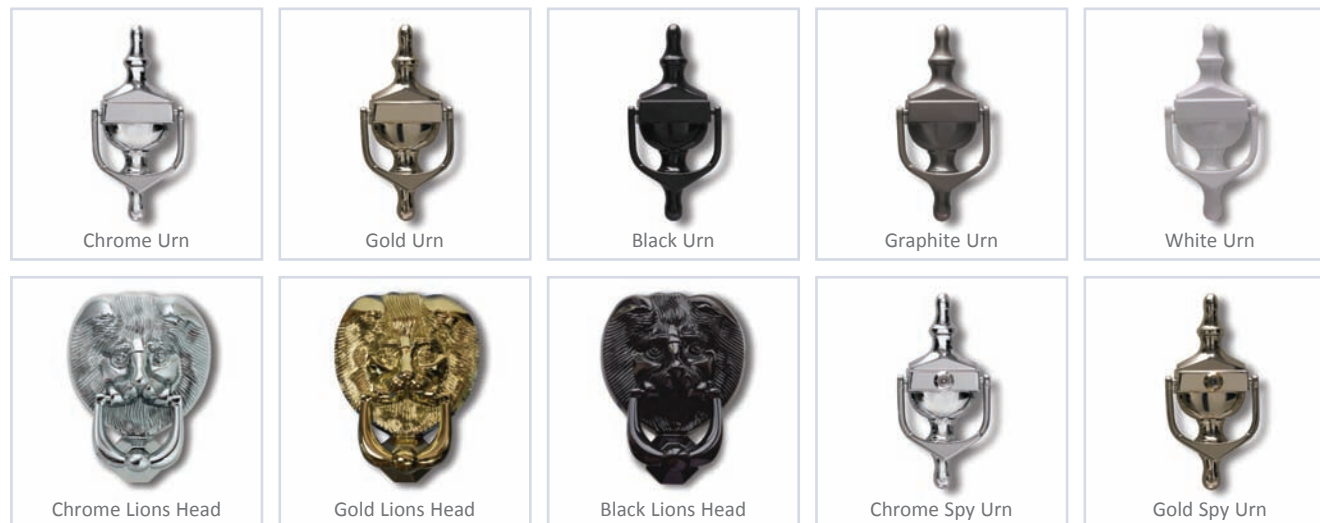


## Hinges





## Knockers



## Contemporary Hardware



If you upgrade to **Secured by Design** specification the door will carry an official security label near the bottom hinge of the door. Do not accept anything but a genuine WB Group composite door.



Excited by all the features in our brochure...?

You won't get all of these benefits on any other door but a Virtuoso door. With all these high quality features we offer, it's important to know you've got the real thing.

We provide an easy way to check your door is an authentic Virtuoso composite door. All of our doors carry an official label near the bottom hinge of the door. Do not accept anything but a genuine Virtuoso composite door.

# Secured by Design

Inform your installer if you wish to upgrade

## WHY UPGRADE

Secured by design (SBD) is a flagship UK police initiative to help 'design out' crime through the use of high-quality innovative products and processes.



Statistics show that when it comes to burglaries in the UK, front doors are the main source of access. Therefore, they need to be made as secure as possible.

In order to achieve Secured by Design status, our composite door has been rigorously tested and must adhere to the organisation's strict standards.

Our SBD upgrade meets the national standard for safer homes and is also recognised by many insurance companies.



## HANDLE

Solid and robust the handle acts as a cylinder guard, preventing attack on the cylinder by an intruder.

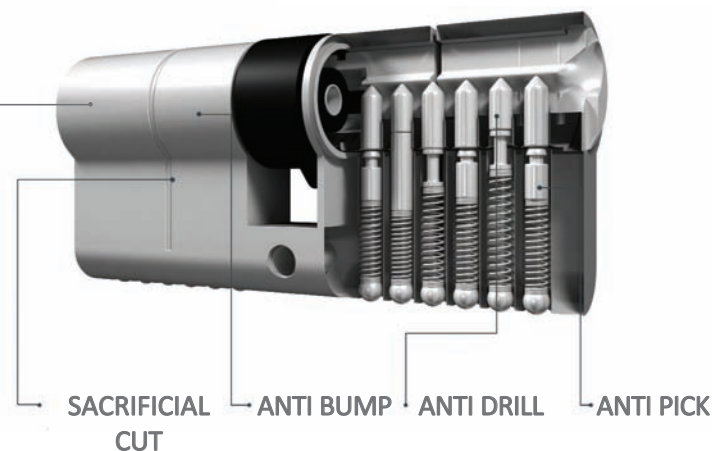


## LOCK

The upgraded door lock has multiple steel locking points for premium security.

## CYLINDER

Anti-bump, anti-lift & anti drill, our door cylinder will stand up to any intruder.



When you **upgrade to Secured by Design** specification your door will carry an official security label near the bottom hinge of the door.











TR

ASTI

▲ CARLTON TWO



TR

BIENNO

▲ CARLTON TWO



TR

MEZANNO

▲ CARLTON TWO



TR

SEPINO

▲ CARLTON TWO





▲ CARLTON TWO



▲ CARLTON TWO



▲ CARLTON TWO



▲ CARLTON



▲ SAGE

▲ CARLTON TWO

SOLID

GLAZED



TR

BROLO



RB

MODENA



RB

SAVONA



▲ PLUM



▲ SLATE

▲ CARLTON TWO

GB

PRISM

LF

SEXTET

NB. Colours are as accurate as the printing process allows.





TR

BIENNO

▲ CARLTON FOUR



TR

ASTI

▲ CARLTON FOUR



TR

MEZANNO

▲ CARLTON FOUR



TR

SEPINO

▲ CARLTON FOUR







▲ CARLTON FOUR

TR

BROLO



▲ CARLTON FOUR

RB

MODENA



▲ CARLTON FOUR

RB

SAVONA

LF

SEXTET



▲ CARLTON FOUR

GLAZED



▲ CARLTON FOUR

14



▲ CARLTON FOUR

GB

PRISM

▲ ANTHRACITE GREY



▲ CARLTON FOUR

▲ OLIVE

DIAMOND LEAD

NB. Colours are as accurate as the printing process allows.





TR

MEZANNO

▲ CHILTON ONE



TR

BIENNO

▲ CHILTON ONE



TR

ASTI

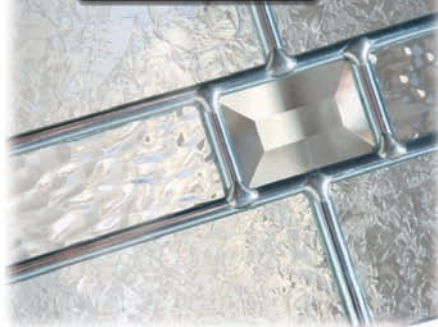
▲ CHILTON ONE



TR

SEPINO

▲ CHILTON ONE







▲ CHILTON ONE



▲ CHILTON ONE



▲ CHILTON ONE

TR

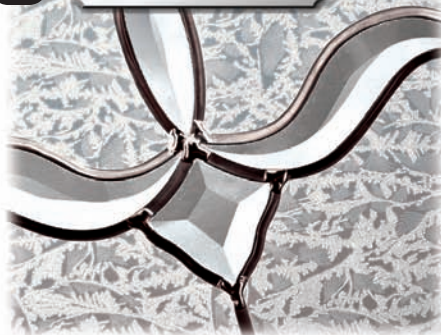
BROLO

TR

AMARO

RB

SAVONA



GT

BELLINI

RB

MODENA



▲ CHILTON ONE

▲ CHILTON ONE



▲ CHILTON ONE

▲ CHILTON ONE

GRILL

TR

ALTO

▲ SAGE

▲ CHILTON ONE

▲ CREAM

▲ CHILTON ONE

NB. Colours are as accurate as the printing process allows.



# Chilton Three

17



TR

SEPINO

▲ CHILTON THREE



▲ CHILTON THREE

TR

BIENNO



▲ CHILTON THREE

TR

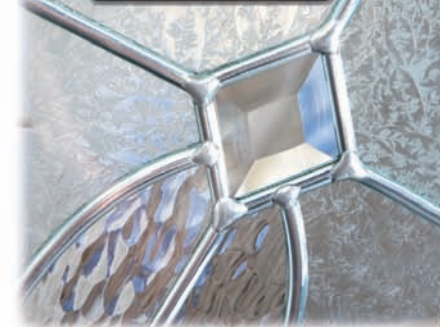
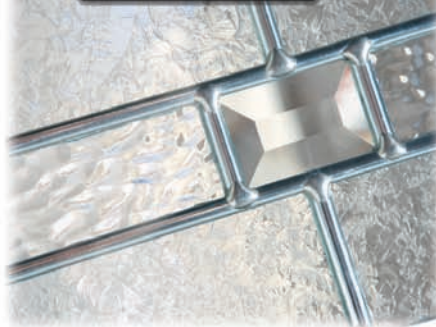
ASTI



▲ CHILTON THREE

TR

MEZANNO







▲ CHILTON THREE



▲ CHILTON THREE



▲ CHILTON THREE

TR

BROLO

RB

MODENA

RB

SAVONA



GB

CORONA

GLAZED



▲ SKY BLUE

▲ CHILTON THREE



▲ ANTHRACITE GREY

▲ CHILTON THREE



▲ SLATE

▲ CHILTON THREE



▲ CREAM

▲ CHILTON THREE

GRILL Top Only

DIAMOND LEAD

NB. Colours are as accurate as the printing process allows.





TR

MILETTO

▲ CLIFTON



TR

CUSNA

▲ CLIFTON



TR

CRYSTALLINE

▲ CLIFTON



TR

ASTI

▲ CLIFTON







▲ CLIFTON

RB

SAVONA



▲ CLIFTON

LF

RONAY



▲ CLIFTON

RB

TIVOLI



▲ CLIFTON

RB

TREVISI



▲ CLIFTON

GB

NERO



▲ SAGE

▲ CLIFTON

LF

NUDA



▲ ANTHRACITE GREY

▲ CLIFTON

LF

SEXTET

NB. Colours are as accurate as the printing process allows.





TR

SERO

▲ CLIFTON



TR

BIENNO

▲ CLIFTON



RB

MODENA

▲ CLIFTON



TR

MASSIMO

▲ CLIFTON





TR

BROLO

▲ CLIFTON



TR

SEPINO

▲ CLIFTON



TR

TREVI

▲ CLIFTON

TR

MEZANNO

▲ CLIFTON

▲ SLATE



LF

ASTER

▲ CLIFTON

▲ ANTHRACITE GREY

GT

BELLINI



GB

TORINO

▲ CLIFTON

▲ PLUM

▲ CLIFTON

▲ OLIVE





TR

SEPINO

▲ ASTON



TR

SERO

▲ ASTON



TR

TREVI

▲ ELTON



TR

NUSCO

▲ ASTON





TR

ASTI

▲ ASTON



TR

BIENNO

▲ ASTON



RB

MODENA

▲ ELTON



TR

VISSO

▲ ELTON

▲ SLATE



LF

RONAY

▲ ELTON

▲ OLIVE



TR

CUSNA

▲ ASTON

▲ ANTHRACITE GREY



LF

ASTER

▲ ASTON

▲ SKY BLUE

NB. Colours are as accurate as the printing process allows.





▲ CRAFTON

TR

VELINO



▲ CRAFTON

LF

CATRIA



▲ CRAFTON

TR

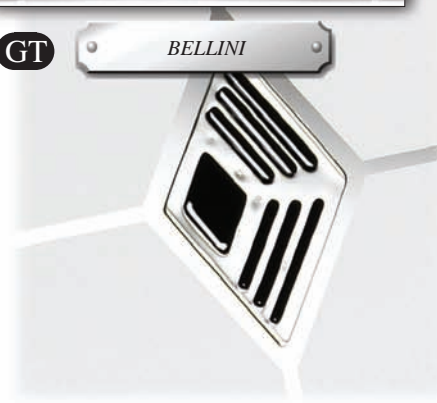
VIENTO



▲ CRAFTON

GT

BELLINI







▲ CRAFTON

TR

PENNINO



▲ CRAFTON

RB

MODENA



▲ CRAFTON

LF

PRADO



▲ CRAFTON

GB

CRYSTALLINE



▲ CRAFTON

LF

VICTORIAN ROSE



▲ CRAFTON

GRILL



▲ CRAFTON

GLAZED

NB. Colours are as accurate as the printing process allows.





TR

CIMONE

▲ CLASTON



GT

BELLINI

▲ CLASTON



TR

VELINO

▲ CLASTON



LF

VICTORIAN ROSE

▲ CLASTON





GB

PRISTINA

▲ CLASTON



GB

PIERO

▲ CLASTON



LF

CATRIA

▲ CLASTON

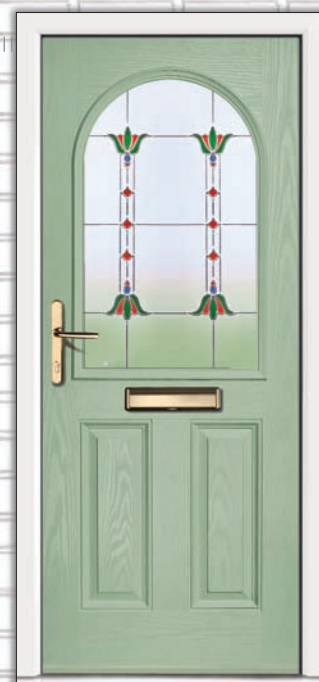


LF

SEXTET

▲ CLASTON

▲ ANTHRACITE GREY



LF

NUDA

▲ CLASTON

▲ SAGE



▲ CLASTON

GRILL



▲ CLASTON

GLAZED





▲ CHAPLETON A9

RB

AZURITE



▲ CHAPLETON 4 HINGE

TR

ASTI



▲ OLIVE

▲ CHAPLETON A1

RB

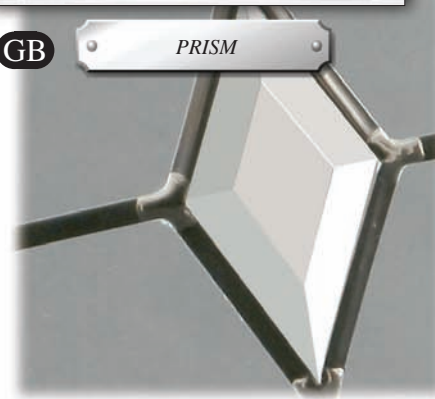
BULLS EYE



▲ CHAPLETON A2

GB

PRISM







▲ CHAPLETON 4 HANDLE

TR

MEZANNO



▲ CHAPLETON A3

RB

TIVOLI



▲ CHAPLETON THREE CENTRE

RB

SAVONA



GLAZED

▲ CHAPLETON A3



GLAZED

▲ CHAPLETON A2



GLAZED

▲ CHAPLETON A1



SOLID

CREAM ▲

▲ CHAPLETON



# Contemporary



◀ ANTHRACITE GREY ▶

◀ CHAPLETON C2 ▶

TR

ASTI

## CONTEMPORARY DOOR

Our contemporary designs add a touch of style to your home.

Choose from one of our unique door styles, beautiful glass designs, superior colour finishes and stainless steel pull handles for the ultimate entrance door.

Our stainless steel pull handles are fitted to both the internal and external of your door to complete the look.



◀ CHAPLETON D4 ▶

GLAZED



◀ ANTHRACITE GREY ▶

◀ CHAPLETON B3 ▶

TR

ASTI



◀ SLATE ▶

◀ CHAPLETON C4 ▶

GLAZED



◀ PLUM ▶

◀ CHAPLETON THREE CENTRE ▶

TR

BIENNO



◀ CHAPLETON FG ▶

GLAZED



◀ ANTHRACITE GREY ▶

◀ CHAPLETON D4 GRILL ▶

GLAZED

NB. Shows slam shut centre locking system





▲ SAGE

▲ MALTON

TR

OPUS



▲ MALTON

TR

VASTO



▲ SLATE

▲ HARTON

TR

BIENNO



▲ ANTHRACITE GREY

▲ HARTON

TR

AMETHYST



▲ OLIVE

▲ MALTON

TR

FLEUR



▲ MALTON

TR

CATRIA



▲ HARTON

TR

PRADO



▲ HARTON

TR

PESARO

NB. Shows slam shut **heritage** locking system



# French Door



◀ CARLTON

SOLID

## FRENCH COMPOSITE

Composite French doors can provide a truly breath taking and unique entrance to your home.

Incorporating a high security multi point locking system, a stylish handle on both door leaves and the option for the doors to open inwards or outwards, our composite French door range is truly unrivalled.



◀ ANTHRACITE GREY

▶ HARTON

GLAZED



▶ CHAPLETON THREE CENTRE

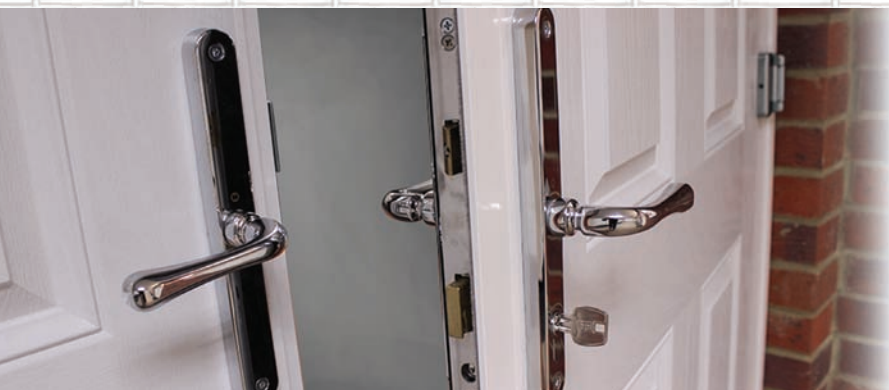
TR

ASTI



▶ CHAPLETON FG

GLAZED







STABLE A1

GB

PRISM



STABLE B1

RB

SAVONA

### STABLE COMPOSITE

Our range of stable doors come with a high security multipoint locking system and a neat thumb turn cylinder to the lower half of the door.

Each leaf is completely surrounded by a rigid sub frame providing stability and security, as well as weather protection.



OLIVE

STABLE A2

GLAZED



STABLE A1

GLAZED



STABLE B1

GLAZED



SAGE

STABLE

SOLID

## Stable Door



OLIVE

STABLE A1

RB

BULLS EYE





WB Group Products Head Office: Unit 8 Station Lane Industrial Estate, Birtley, Chester le Street, County Durham. DH3 1DQ  
T: 0191 410 9333 F: 0191 410 7745 E: [sales@wbgroup.co.uk](mailto:sales@wbgroup.co.uk) W: [wbgroup.co.uk](http://wbgroup.co.uk)

